

HIA-THE LAMINEX GROUP

The judges said this was a well-designed and laid-out kitchen, with exceptional attention to detail.

A great selection of textiles and materials gave the kitchen a stylish and luxurious feel.

A central island bench with waterfall ends to two sides is the centrepiece.

This bench incorporates a breakfast bar and a wine rack with a stainless-steel front — there's another wine rack on the far wall.

Above is a lowered partition on the ceiling with inset task lighting.

Light-coloured CaesarStone benchtops complement glossy light-brown veneer cabinets with anodised aluminium channels and a glass splashback.

The overhead cabinets have been finished with bronze-coloured glass with matching framework.

KITCHENS & BATHROOMS AWARDS 2009

CATEGORY: New Kitchen Project \$40,001 to \$60,000

WINNER: Hillarys home

COMPANY: Angelo Petkovic Cabinets

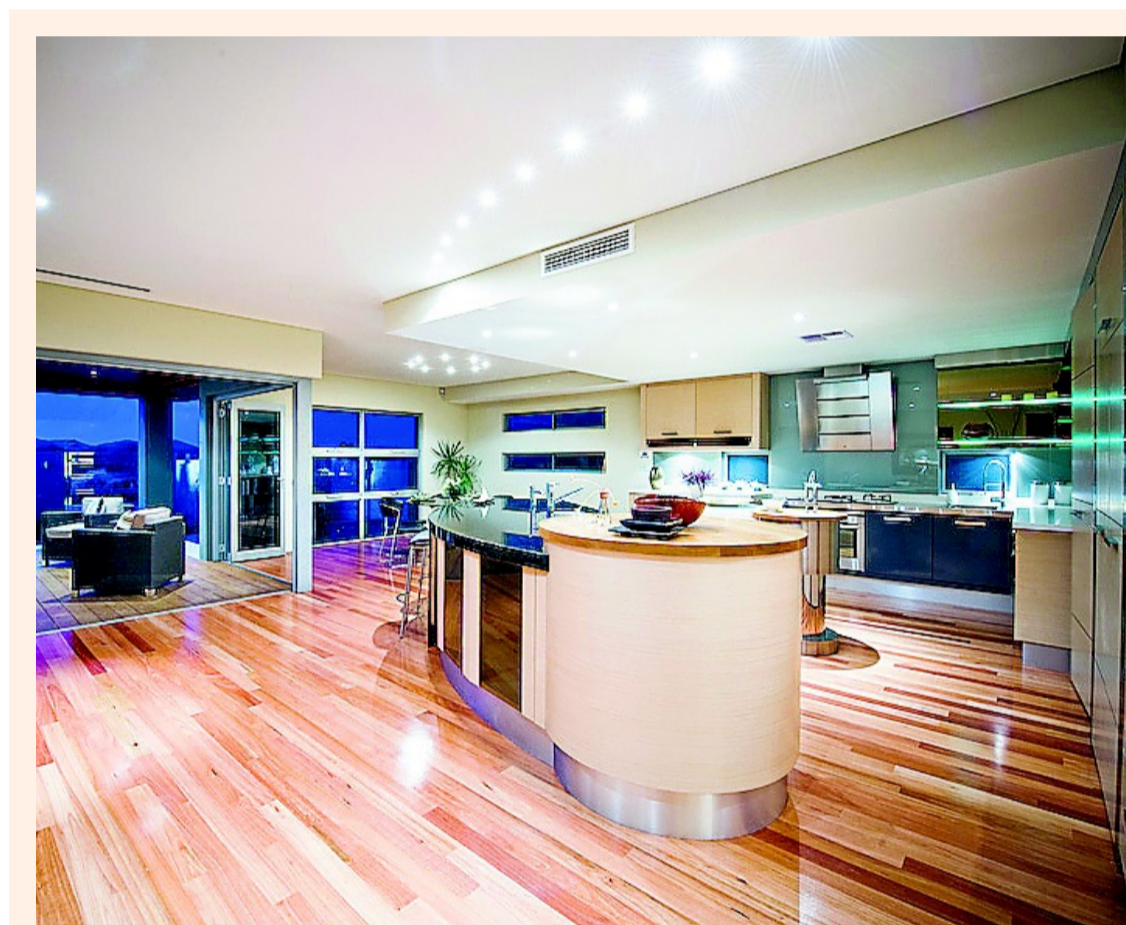
The pull-out pantry and the oven have metallic lacquer surrounds.

Stainless-steel appliances and a neutral-toned tiled floor complete the modern look.

Part of the design brief was to tuck the fridge and pantry out of sight to enhance the clean, uncluttered feel.

To achieve this, the pantry was installed to the side of the kitchen with the fridge recess in there.

There are shuttered windows near the cooktop area for natural ventilation.



The judges said this kitchen, the centrepiece of a former show home, was a great kitchen with plenty of attention to detail.

It was an entertainer's kitchen that included a range of textures, finishes and shapes, creating a talking point for guests.

Black Galaxy granite is used for the main island bench, while the other tops are Corian, oak and stainless steel.

The cupboards are a mix of

timber veneer and vinyl-wrap and some overhead cabinets have semi-translucent doors.

The curved island bench has a breakfast bar at one end and display cabinets at the other.

Stainless-steel appliances include an eye-catching vertical-mounted range hood near the sink.

A small island bench in the centre, dubbed the surfboard and supported by steel tubes, can be used as an extra preparation zone.

KITCHENS & BATHROOMS AWARDS 2009

CATEGORY: New Kitchen Project, \$60,001 and over; New Kitchen Project of the Year; Regional Kitchen Project of the Year

WINNER: Halls Head home

COMPANY: Mulvay Builders

This luxurious kitchen in an up-market apartment in the heart of the Mandurah Canals is the centrepiece of the home's living and entertainment zone.

Designer Carmen Hansberry has created a functional kitchen without losing the "wow" factor.

The judges said it captured the true essence of the resort lifestyle of the area.

The contrasting classic white gloss vinyl doors, frosted glass frames and solid timber floors combined to enhance the look of the Purity essa stone benchtop.

Other features include two small wind-out windows over the benchtops, which link visually

KITCHENS & BATHROOMS AWARDS 2009

CATEGORY: New Kitchen Project \$20,001 to \$30,000

WINNER: Mandurah home

COMPANY: The Maker

with the shape of an appliance cupboard nearby, and two sets of overhead cupboards.

Three silver light pendants hang over the long breakfast bar that has space for seating on one side and an integrated dishwasher near the double sink on the other.

Two movable ceiling spotlights highlight the wide fridge recess and ceramic cooktop.



KITCHENS & BATHROOMS AWARDS 2009

CATEGORY: New Kitchen Project \$30,001 to \$40,000

WINNER: Booragoon home

COMPANY: Western Cabinets

Sandblasted veneer and white gloss vinyl create a contrast of textures on the cabinets in this kitchen, designed by Debbie Ferguson.

In an open-plan layout with the dining and living areas, the kitchen overlooks these zones as well as the alfresco area.

White CaesarStone benchtops complement the two kinds of cabinet faces and a glass splashback gives a dynamic modern look.

Aluminium frames on the windows and minimal overhead cabinetry complete the design.

An eye-catching focal point was incorporated above the fridge recess, where display shelves have inset downlights.

The other illumination used is a mix of downlights and pendant lights above the breakfast bar.

The kitchen has stainless-steel appliances, including a dishwasher.

An L-shaped bench encompasses a breakfast bar and offers plenty of space for preparation.

The sink is behind a partition so preparation mess can be easily hidden from guests.